

ODYSSEY®

Infrared Imaging System

- QUANTITATIVE WESTERN BLOTS
- HIGH SENSITIVITY
- WIDE, LINEAR DYNAMIC RANGE
- NO FILM OR DARKROOM
- WIDE RANGE OF APPLICATIONS



The Standard for
Western Blot Technology



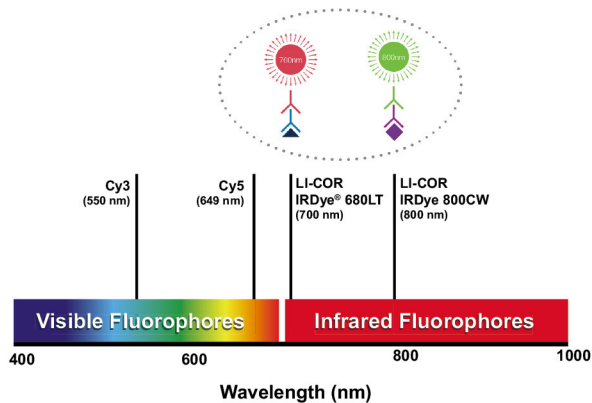
Infrared Imaging System 란?

- Auto fluorescence 와 Light Scattering 이 적게 일어나는
700nm 와 800nm 파장을 이용하여 타겟 단백질을 검출
- 시간에 관계없이 일정한 형광 Signal을 통해 일관성 있는 정량 데이터를 획득 → 우수한 재현성
- 높은 민감도를 통해 한 Blot 안에서 강한밴드와 약한밴드를 Saturation 없이 한번에 검출

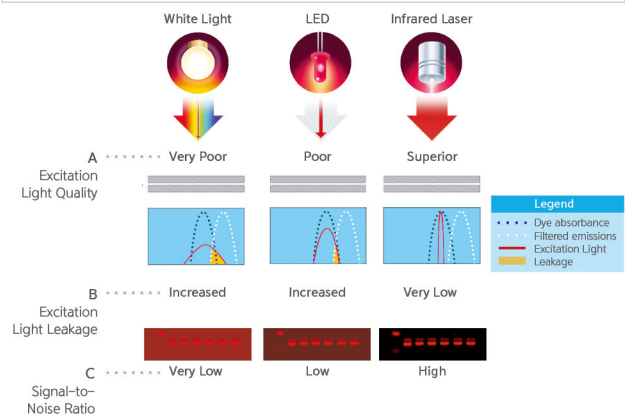
왜 Infrared Imaging System을 사용하여야 하나?

- 논문 게재 시, Western Blots 실험에 대한 정량 데이터 검증 요구 증가
- 다수의 레퍼런스 보유 (20,000편 이상의 논문 게재)

700nm, 800nm Infrared 의 파장을 이용하여
Autofluorescence 가 매우 적음!!



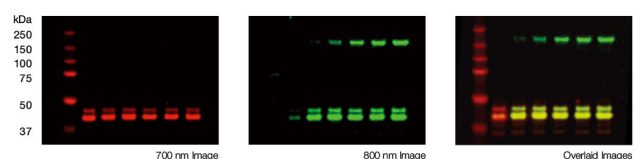
Infrared Laser 를 사용하여 Background 의
Noise 낮추어 낮은 농도의 단백질도 검출 가능한 민감도!!



정량적인 Western Blots
타이밍과 노출시간에 따라 시간이 달라지는
Enzyme label 과는 다른 Antigen의
농도에 따른 발현으로 Linear 한 결과를 얻을 수 있음!!



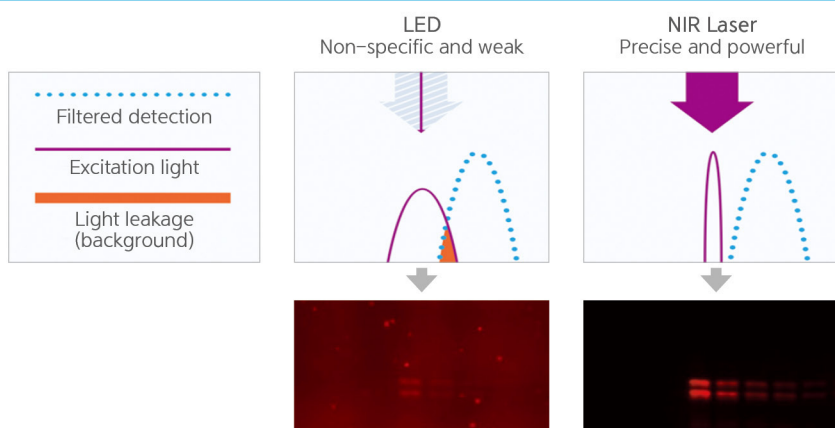
두 타겟 동시 검출
700nm 와 800nm 의 Infrared detection 채널을
이용하여 두 개의 샘플이 동시에 검출 가능!!



Odyssey Infrared Imaging System의 이점은?

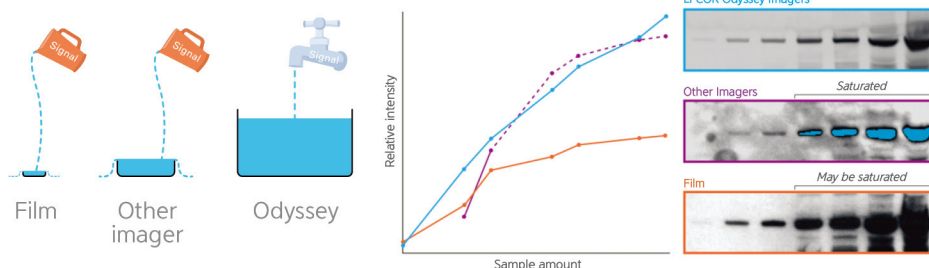
높은 민감도와 신뢰성 있는 데이터를 제공

- NIR 형광을 통해
더 높은 감도와 정확성으로
비교 발현 분석을
수행할 수 있습니다.



- 넓은 검출 구간을
제공합니다.
(6 logs dynamic range)

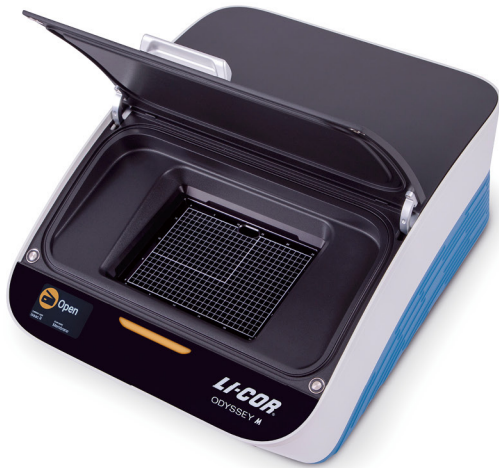
Saturation에 대한 우려
없이 신호를 측정할 수
있습니다.



실험시간 절약과 절차의 간소화

Odyssey Western 방법		Chemiluminescent Western 방법	
Membrane Preparation and Transfer	↔	Membrane Preparation and Transfer	
Block	↔	Block	
Primary Incubation	↔	Primary Incubation	
Wash	↔	Wash	
Secondary Antibody Incubation (IRDye labeled secondary antibody)	↔	Secondary Antibody Incubation (HRP labeled secondary antibody)	
Wash	↔	Wash	
Scan		Chemiluminescent Reagent Prep	
		Membrane Application	
		Exposure Series	
		Strip and Reprobe	

Odyssey® M 18 Channel All in one imager



- 01 18개의 채널에서 근적외선 형광, 가시광선 형광, 발광, 흡광 검출이 모두 가능한 활용 범위 최상의 이미징 시스템
- 02 한번의 클릭으로 모든 채널의 이미지를 한번에 획득
- 03 라인 스캐닝 기술로 DLx 보다 더 빠른 스캔 속도
- 04 Membranes, Gels, Multiwell plates, Slides까지 모든 타입의 어세이 형태에 대한 검출공간을 제공
- 05 5 μ m 해상도를 이용해 정교한 이미지 데이터 제공

어세이 타입에 맞게 최적화된 구조와 디자인



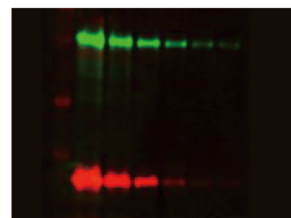
Applications



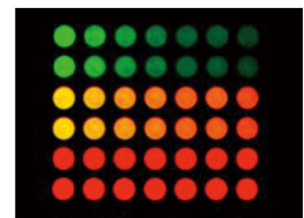
3 Color Western Blot



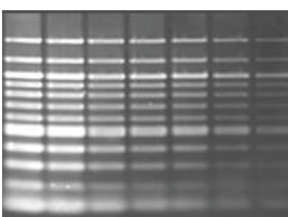
ECL Western Blot



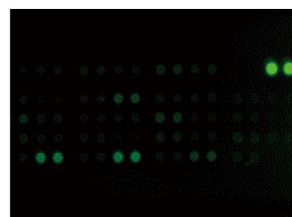
In Gel Western



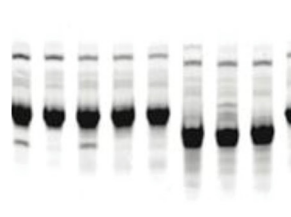
ELISA and In-Cell Western



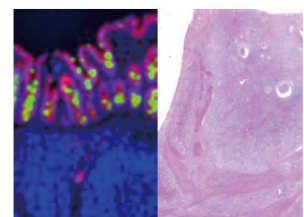
DNA Gels



Protein Arrays

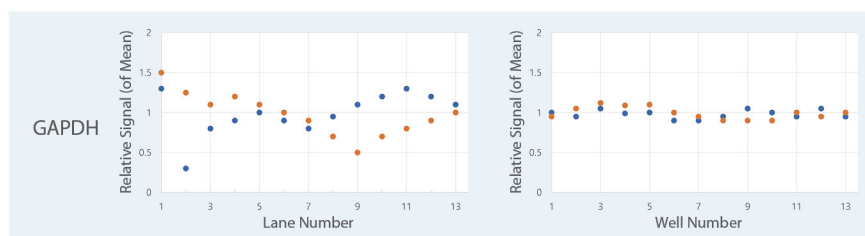
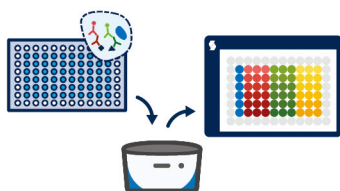


Protein Gels



Tissue Section Imaging

■ 세포 내 단백질을 96well 이상의 멀티웰에서 검출하는 In-Cell western 분석으로 웨스턴 블랏의 화학발광 검출 방법 대비 짧은 시간 내에 더욱 일관성 있는 데이터를 얻을 수 있습니다.



■ 형광 파장의 제한 없이 18개의 풍부한 채널 조합으로 여러 개의 타겟을 한번에 분석하세요.

	Channel	Odyssey M Channel		Channel	Odyssey M Channel
1	800	785 Ex – 820 Em	10	Chemi	Chemi (Option)
2	700	685 Ex – 720 Em	11	RGB Epi	RGB Epi
3	520	520 Ex – 590 Em	12	630 Epi	630 Epi
4	520A	520 Ex – 720 Em	13	525 Epi	535 Epi
5	520B	520 Ex – 820 Em	14	470 Epi	470 Epi
6	488	488 Ex – 530 Em	15	RGB Trans	RGB Trans
7	488A	488 Ex – 590 Em	16	630 Trans	630 Trans
8	488B	488 Ex – 720 Em	17	525 Trans	525 Trans
9	488C	488 Ex – 820 Em	18	470 Trans	470 Trans

Specifications

Image area	Total Image area : 25W × 18D (cm) / Chemi region : 15W × 11D (cm)
Dynamic range	>6 logs for chemiluminescence (optional) and fluorescence
Laser Lifetime	685 nm and 785 nm: 20,000 hours, 488 nm and 520 nm: 40,000 hours
Light Sources	RGB LED (trans-illumination), RGB LED (reflective illumination) Solid-state diode laser at 488 nm, 520 nm, 685 nm, 785 nm
Detectors	sCMOS image sensor, Sensor for chemiluminescence: CCD (pixel size 6.45 μm)
Resolution	5~100μm
Focusing	adjustable -1.00 to 5.00 mm above the scan bed
Software	LI-COR Acquisition Software(image acquisition), Empiria Studio Software(Analysis)
Operating Conditions	operating temperature 15-35°C
Power Requirements	between 100-240 VAC (voltage fluctuations not to exceed 10% of the nominal voltage); < 3 Amp maximum; At 120 V: 0.5 Amp typical when idle; 50-60Hz
Dimensions	61W × 76D × 38H (cm)
Weight	55 kg (121 lbs) w/ chemiluminescence module 52 kg (115 lbs) w/o chemiluminescence module

Odyssey® DLx



01 Infrared laser를 이용하여 가시광선 보다 membrane, cell, tissue 등에서 background 가 매우 낮음 → High Sensitivity

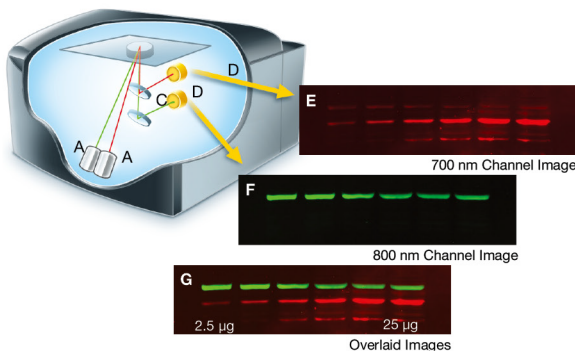
02 다양한 Application 이 가능한 다용도의 System

03 50년 이상 이미징 분야의 혁신을 선도해온 기술력

04 넓은 imaging 면적 (25cm x 25cm)

05 Autoscan 을 통한 Easy-to-use

Two Independent Infrared Detection Channels

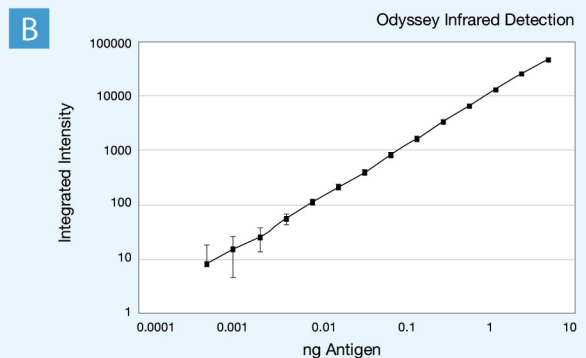
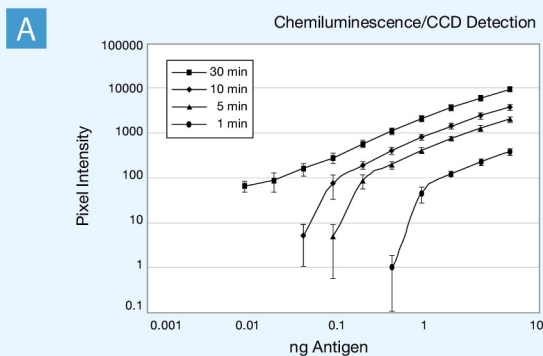


- ▣ 두 개의 분리된 Laser 와 Detection 시스템 (700nm, 800nm – Two Target protein 검출 가능)
- ▣ 긴 수명의 Diode Laser 와 Solid-state Detector 사용
- ▣ White light, LED light source Filter wheel 을 사용하는 System 보다 뛰어난 감도

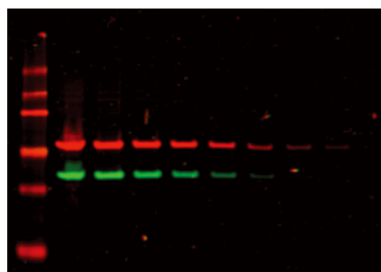
정량적인 Western blots 데이터

- ▣ IRDye Antibody를 사용하여 Substrate 및 시간 등의 변화에 상관없이 농도에 따라 linear 한 결과를 얻을 수 있음

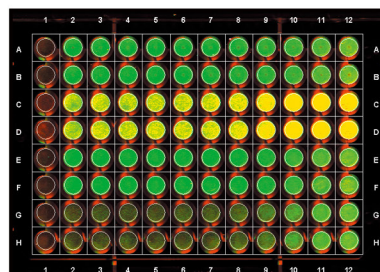
* 몇 달이 지나도 같은 결과를 얻을 수 있음



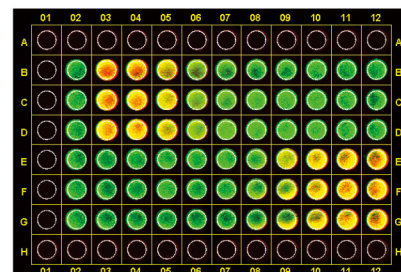
Applications



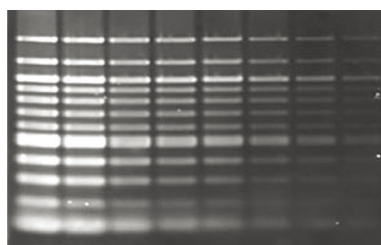
IR Fluorescent Western Blots



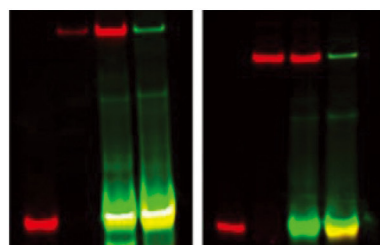
In-Cell Western assays



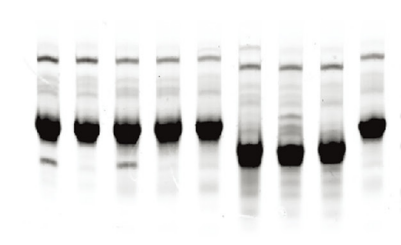
On-Cell Western assays



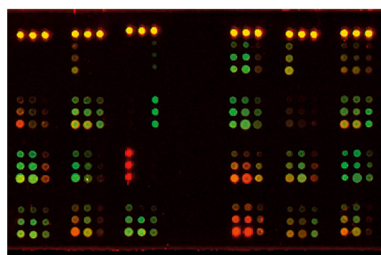
DNA Gel Staining (Syto® 60)



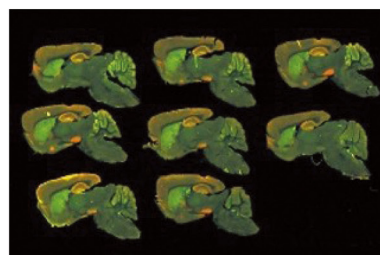
EMSA/Gel Shift Assays



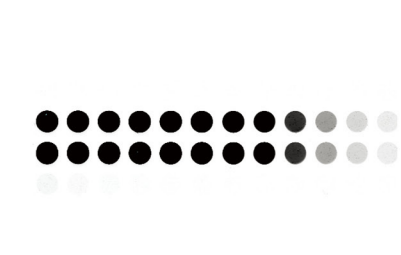
Coomassie-Stained Gels



Protein Arrays



Tissue Section Imaging



ELISA

Specifications

Image Field Size	25 cm x 25 cm
Dynamic Range	Manual:4 logs / Auto: > 6 logs
Laser Lifetime	40,000 working hours
700 Channel Laser Source	Solid-state laser diode at 685 nm
800 Channel Laser Source	Solid-state laser diode at 785 nm
Detectors	Silicon avalanche photodiodes
Scanning Speed	5-40 cm/s
Resolution	21-337 µm
Focusing Range	Microscope is adjustable 0 mm – 4 mm above the scan bed to obtain best signal-to-noise ratio
Software	LI-COR Acquisition Software(image acquisition), Empiria Studio Software (Analysis)
Operating Conditions	15-35°C and dew point no greater than 20°C
Power Requirements	Universal input range is between 100-240 VAC; 4 Amp maximum; 1 Amp typical; 50/60 Hz
Dimensions	37 h x 53 w x 62 d cm (14.5 x 21 x 24.4 inches)
Weight	33 kg (72 lbs)

Odyssey® XF Dual-Mode Imaging System

- 01 Chemiluminescent 와 Infrared fluorescent imaging 모두 가능
- 02 다양한 Nucleic acid detection
- 03 특허 받은 FieldBrite XT optical technology를 통해 일반 CCD camera 보다 높은 감도



Quantitative Infrared Fluorescent Advantages

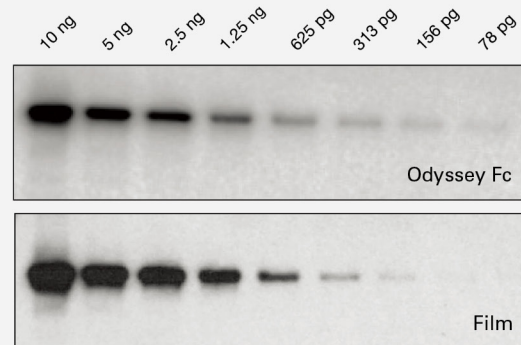
- 6 logs dynamic range 이상까지 정확한 정량
- 유일하게 Laser를 사용
- 가시광선 형광을 이용하는 것 보다 높은 감도

Chemiluminescent Advantages

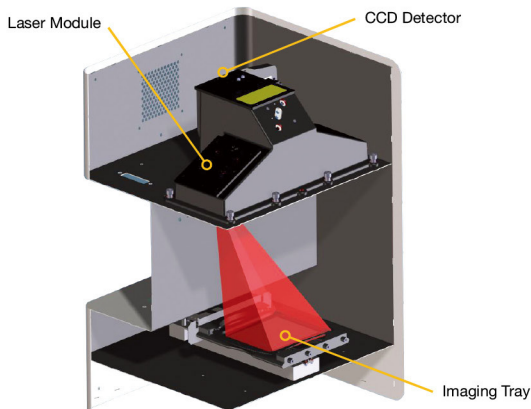
- Saturation이 거의 안일어남
- 이미지를 얻고 난 후 소프트웨어 조작이 필요 없음
- 필름과 암실 유지에 드는 비용 절감

Nucleic Acid Detection

- Agarose gel digital imaging을 위해 사용 되는 EtBr과 SYBR family 모두 검출
- 기기 오염 방지를 위하여 disposable imaging tray 사용



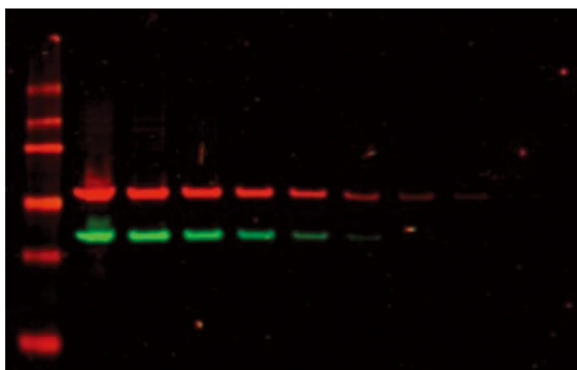
Chemiluminescence detection of purified transferrin, using the Odyssey Fc(top) imager of film exposure(bottom). Detection sensitivity is similar. With Odyssey Fc detection blowout of stronger bands is reduced and band resolution is



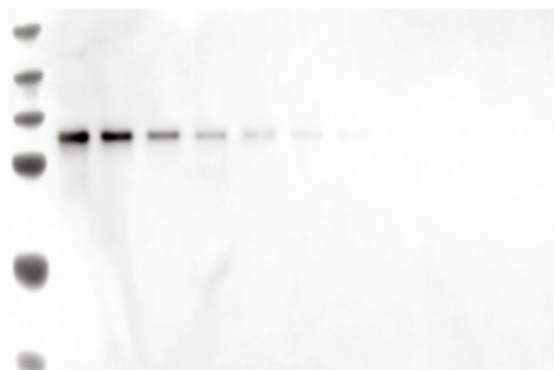
FieldBrite™ XT Optical System

- 01 6 logs dynamic range로 이미지의 "Stacking"이 없어 saturation이 거의 없음
- 02 균일한 Laser 를 통해 전체적으로 일정한 빛을 제공 "CV < 3 across field"
- 03 Supercooling 없이도 CCD의 noise 가 매우 낮아 높은 감도와 고해상도를 제공

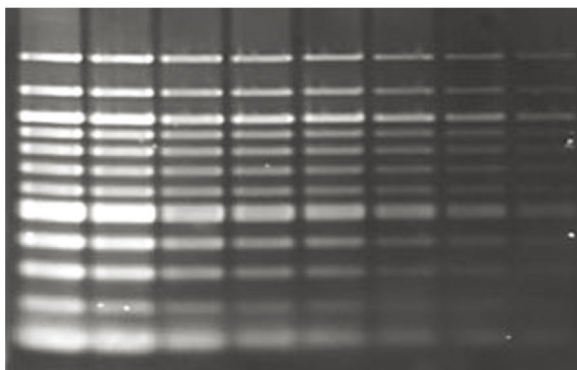
Applications



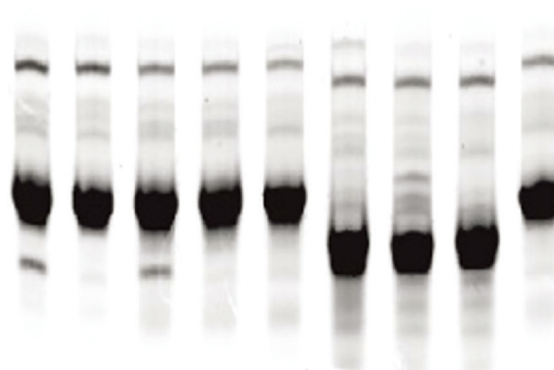
IR Fluorescent
Western Blots



Chemiluminescent
Western Blots



DNA Gel Staining
(EtBr, SYBR® Family, and Syto® 60)



Coomassie-Stained Gels

Specifications

Image Field Size	10 cm x 12 cm
Dynamic Range	> 6 logs
Uniformity of Illumination	CV <3% across field
Laser Lifetime	20,000 working hours
600 Channel Laser Source	Diffuse light at 520 nm
700 Channel Laser Source	Solid-state laser diode at 685 nm
800 Channel Laser Source	Solid-state laser diode at 785 nm
Detectors	Low-noise CCD. Thermoelectrically cooled.
Focusing Range	Automatic
Software	LI-COR Acquisition Software(image acquisition), Empiria Studio Software (Analysis)
Operating Conditions	15-35°C and dew point no greater than 22°C
Power Requirements	Universal input between 100-127 VAC and 200-240VAC; 4 Amp maximum; 1 Amp typical; 50/60 Hz
Dimensions	67.3 cm h x 41.4 cm w x 47 cm d (26.5 x 16.3 x 18.5 inches).Depth with imaging drawer open is 59.7 cm (23.5")
Weight	27 kg (60 lbs)

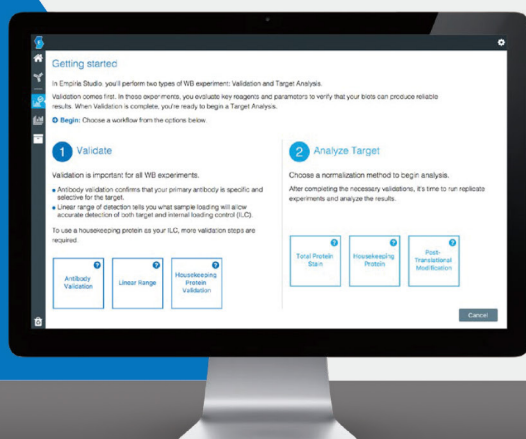


Empiria Studio® Software

쉽고 간단하게 전문가 수준의 분석이 가능합니다!

- ✓ 직관적인 디자인의 사용자 인터페이스
- ✓ 심플한 구성으로 초보자도 전문가 수준의 분석이 가능
- ✓ 반복실험의 통계적 분석 가능
- ✓ 실험상의 직선성 및 안티바디 밸리데이션 가능
- ✓ 사용자 간의 변동성 최소화 & 재현성 최상화한 분석 프로그램

Beginner	Intermediate	Expert
Signal Identification Software	Signal Identification Software	Signal Identification Software
18% CV 126 minutes	10% CV 93 minutes	8% CV 70 minutes
Empiria Studio Software (Data Integrity Software)	Empiria Studio Software (Data Integrity Software)	Empiria Studio Software (Data Integrity Software)
3% CV 35 minutes	3% CV 37 minutes	3% CV 38 minutes



Designed in Collaboration with



licor.com/empiria

■ 다양한 어플리케이션을 확인해보세요

	Odyssey M	Odyssey DLx	Odyssey XF	C-digit	D-digit
Near-Infrared Fluorescent	✓	✓	✓		
Visible Fluorescent Western blot	✓				
Chemiluminescent Western Blot	✓*		✓	✓	
Colorimetric Western Blot	✓				
In-Cell Western Assay	✓	✓			
On-Cell Western Assay	✓	✓			
Cell Health Assay	✓				
ELISA	✓				
Fluorescent protein Gel	✓	✓	✓		
Colorimetric Protein Gel	✓				
Nucleic Acid Gel	✓	✓**	✓		✓
EMSA/Gel Shift Assay	✓	✓			
Fluorescent Tissue Section	✓	✓			
Histological Staining	✓				
Protein Array	✓	✓			

*Optional
**SYTO 60 only

C-DiGit[®] Compact Design Blot Scanner

01 합리적인 가격의 Chemiluminescens Scanner

02 Film 과 비슷한 높은 감도

03 Compact 한 크기의 공간 활용도



■ 스캔방식으로 높은 감도 ▶ Film-quality data

- Blot과 CCD사이의 거리가 Blot과 Film 사이의 거리처럼 매우 짧아서 받아들이는 빛의 양이 많아 Film과 비슷한 감도를 가집니다.

$$\text{Intensity} \propto \frac{1}{\text{Distance}^2}$$

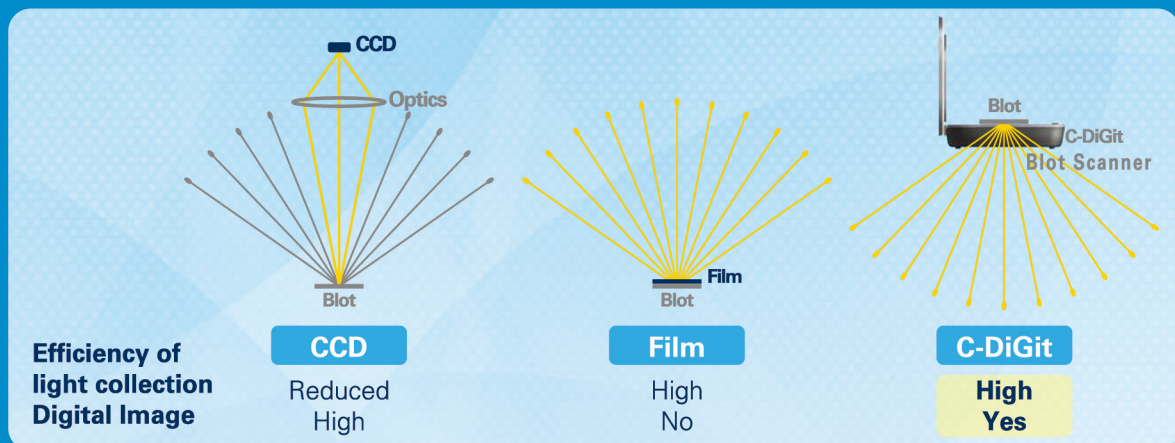


Figure 1. The C-DiGit Blot Scanner combines high-efficiency light collection with digital image output. Film collects light efficiently, but the output is not digital. CCD systems provide digital images, but with low-efficiency light collection and loss of photons.

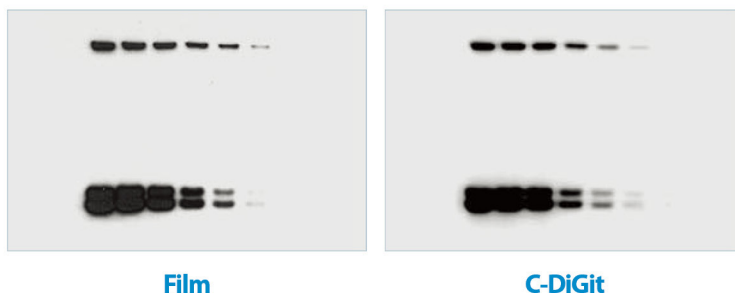


Figure 2.

Film :
ERK 1/2 in A431 Cell lysate
(SuperSignal[®] West Pico Substrate)

Digital :
ERK 1/2 in A431 Cell lysate
(SuperSignal[®] West Pico Substrate)

Specifications

Image Area	10.0 cm x 8.5 cm
Resolution	196 μ m x 196 μ m
Operating Conditions	operating temperature 15-30 °C
Detector Type	Low-noise CCD
Acquisition Times	Approximately 6 (Standard) and 12 (High) minutes.
Software	Image studio
Image Generation and Format	16 bit floating point tiffs.
Image Display Options	Pseudocolor, positive and negative grayscale, single color (red, green or blue).
Power Requirements	100-240 VAC, 50-60 Hz.
Product Dimensions	27.94 cm L x 22.23 W x 7.3 H (11" L x 8.75" W x 2.875" H)
Weight	2.18 kg (4.8 lbs.)

■ 실험 Bench 또는 책상 위 어디서든 간편하게, Image 검출에서 분석까지!

- C-DiGit는 Film Cassette과 비슷한 사이즈로 공간활용도가 매우 높으므로 실험 Bench나 개인책상 위 어디에서나 설치하여 사용하기 간편하며 이동이 편리합니다.

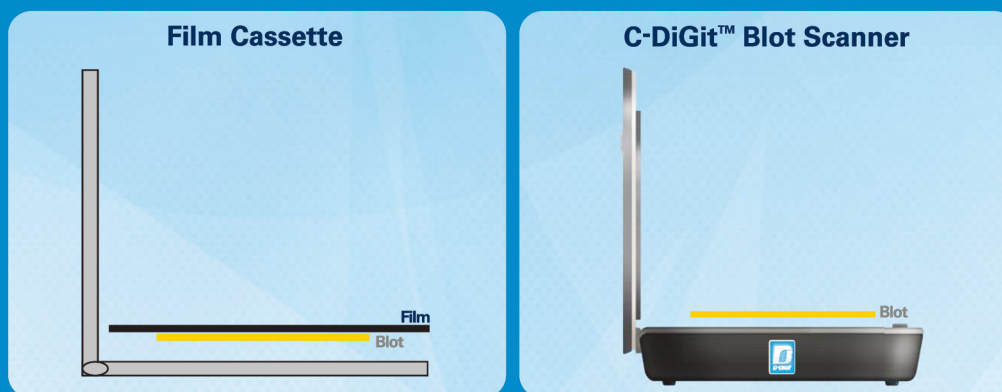
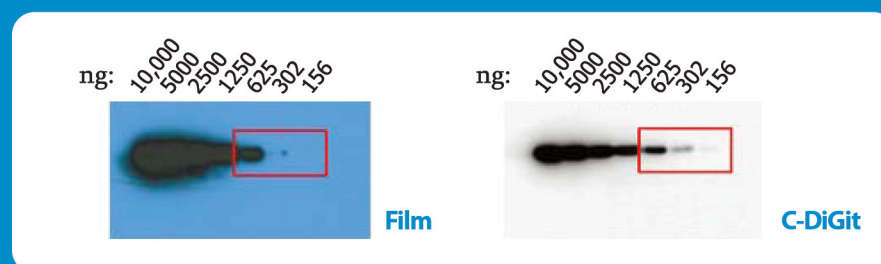


Figure 3. Like film, C-DiGit imaging uses a very short working distance to maximize light collection. The Western blot is placed face down, directly on the scan surface.

■ Film 사용으로 인한 번거로움 없이 편리하게!



- No multiple exposures
- No saturation
- No developer
- No darkroom
- No separate analysis
- Lower expense

Figure 4. ERK detected in serially diluted cell lysates.
 Film: SuperSignal® West Pico substrate was used, with 5 min film exposure.
 Signal dropped off abruptly at < 625 ng cell lysate.
 C- DiGit Blot Scanner imaging: Signal decrease was much more gradual,
 and tonal variations were seen (625-156 ng).

D-DiGit® Gel Scanner



01 Blue LED 방식으로 안전한 실험 방법

02 광학 시스템과 형광 화학이 제공하는 뛰어난 감도로 미세한 샘플도 확실하게 감지 할 수 있습니다.
(0.04 ng 의 nucleic acid 까지 감지)

03 측정에서 분석까지 쉽고 편한 사용

■ 사용가능한 Stain

- ▣ SYBR® Safe DNA Gel Stain
- ▣ SYBR® Gold Nucleic Acid Gel Stain
- ▣ SYBR® Green I Nucleic Acid Gel Stain
- ▣ Diamond™ Nucleic Acid Dye
- ▣ GelGreen™ Nucleic Acid Gel Stain
- ▣ GelRed™ Nucleic Acid Gel Stain
- ▣ Midori Green Direct
- ▣ Midori Green Advanced DNA Stain
- ▣ GreenView™ Nucleic Acid Gel Stain
- ▣ GreenView™ Plus Nucleic Acid Gel Stain
- ▣ GreenView™ Ultra DNA Gel Stain

■ Specifications

Image Area	17.8 cm x 12.7 cm/7" x 5" (L x W)		
Resolution	150, 300, and 600 dpi	Operating Temperature	5°C to 40°C/41° to 104°F
Detector Type	CCD	Light Source	Blue LED
Exposure Times	4X (default, 40 sec); ranges from 0.25X to 24X		
Scanning Modes	16-bit grayscale or 8-bit grayscale		
Image File Format	JPG (8-bit), TIFF (8-or 16-bit)	Excitation	475 nm (± 15 nm)
Emission	≥520 nm	Sensitivity	0.04 ng per band
Product Weight	4.8 kg (10.56 lb) – without viewing shield; 5 kg (11 lb) – with viewing shield		
Product Dimensions	30.48 cm x 30.48 cm x 12.70 cm/12" x 12" x 5" (L x W x H)		
Interfaces	Hi-Speed USB (USB 2.0)		
Voltage	AC 100-240V, 50-60 Hz, 1.5A max. (input); DC 15V, 2.5A (output)		
Software	Imagestudio		
Power Consumption	37.5 W max		
Power Supply	30.48 cm x 30.48 cm x 12.70 cm/12" x 12" x 5" (L x W x H)		
Voltage	AC 100V to 240V		
Windows OS Compatibility	Pentium IV PC; 300 MB HDD or above; 512		

Image Studio™

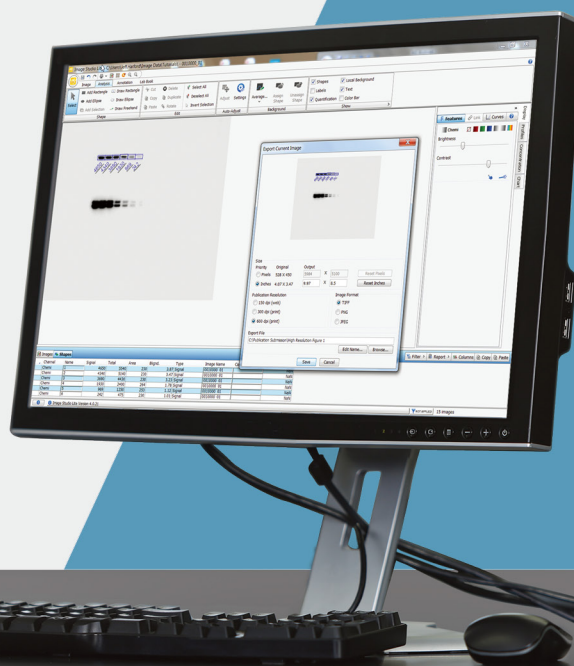
Data Analysis Software

LI-COR Image Studio 소프트웨어는
손쉽게 **data capture, analysis, record keeping** 할 수 있습니다.

- ✓ 일관된 Image capture를 통해 data 변동성을 최소화
- ✓ 원본 data 에 영향을 주지 않으면서 데이터, 정규화, 정량화 및 차트화 분석 가능
- ✓ 문서화 및 향후 reference를 위해 모든 raw 데이터를 편리하게 보관

Acquire and Analyze

- Western blots
- Protein and DNA gels
- Plate-based assays
- Arrays
- Tissue sections



IRDye® Secondary Antibodies

Secondary Antibody	Part Numbers And IRDye Label			Secondary Antibody	Part Numbers And IRDye Label		
	800CW	680RD	680LT		800CW	680RD	680LT
Donkey anti-Chicken IgG (H+L), 0.1mg	925-32218	925-68075	925-68028	Goat anti-Mouse IgG (H+L), 0.1mg	925-32210	925-68070	925-68020
Donkey anti-Chicken IgG (H+L), 0.5mg	926-32218	926-68075	926-68028	Goat anti-Mouse IgG (H+L), 0.5mg	926-32210	926-68070	926-68020
Donkey anti-Goat IgG (H+L), 0.1mg	925-32214	925-68074	925-68024	Goat anti-Mouse IgG1 Specific, 0.5mg	926-32350	-	926-68050
Donkey anti-Goat IgG (H+L), 0.5mg	926-32214	926-68074	926-68024	Goat anti-Mouse IgG2a Specific, 0.5mg	926-32351	-	926-68051
Donkey anti-Guinea Pig IgG (H+L), 0.1mg	925-32411	925-68077	925-68030	Goat anti-Mouse IgG2b Specific, 0.5mg	926-32352	-	926-68052
Donkey anti-Guinea Pig IgG (H+L), 0.5mg	926-32411	926-68077	926-68030	Goat anti-Mouse IgM ((μ chain specific), 0.1mg	925-32280	925-68180	925-68080
Donkey anti-Mouse IgG (H+L), 0.1mg	925-32212	925-68072	925-68022	Goat anti-Mouse IgM ((μ chain specific), 0.5mg	926-32280	926-68180	926-68080
Donkey anti-Mouse IgG (H+L), 0.5mg	926-32212	926-68072	926-68022	Goat anti-Rabbit IgG (H+L), 0.1mg	925-32211	925-68071	925-68021
Donkey anti-Rabbit IgG (H+L), 0.1mg	925-32213	925-68073	925-68023	Goat anti-Rabbit IgG (H+L), 0.5mg	926-32211	926-68071	926-68021
Donkey anti-Rabbit IgG (H+L), 0.5mg	926-32213	926-68073	926-68023	Goat anti-Rat IgG (H+L), 0.1mg	925-32219	925-68076	925-68029
Goat anti-Human IgG (H+L), 0.1mg	925-32232	925-68078	925-63032	Goat anti-Rat IgG (H+L), 0.5mg	926-32219	926-68076	926-68029
Goat anti-Human IgG (H+L), 0.5mg	926-32232	926-68078	926-68032				

IRDye® Protein Labeling Kits

Protein labeling kit	IRDye® 800CW	IRDye® 680RD	IRDye® 680LT	IRDye® 650
High molecular weight kit	928-38040	928-38072	928-38066	928-65040
Low molecular weight kit	928-38042	928-38074	928-38068	-
Microscale kit	928-38044	928-38076	928-38070	928-65044*

* High-MW

Visible Fluorescent Secodary Antibodies

Secondary Antibody	VRDye™ 549	VRDye™ 490	IRDye™ 650
Goat anti-Mouse IgG 0.5mg	926-54010	926-49010	926-65010
Goat anti-Rabbit IgG 0.5mg	926-54020	926-49020	926-65020
Donkey anti-Goat IgG 0.5mg	926-54014	926-49014	-
Donkey anti Mouse IgG 0.5mg	926-54012	926-49012	-
Donkey anti-Rabbit IgG 0.5mg	926-54013	926-49013	-



Visible Fluorescent Protein Labeling Kits

Protein labeling kit	IRDye® 650	VRDye™ 549	VRDye™ 490
High molecular weight kit	928-65040	928-54040	928-49040
High MW Microscale kit	928-65044	928-54044	928-49044

In-Cell Western™ Assay Kits and Reagents

GAM CellTag™ 700 Stain		GAM/GAR CellTag™ 520 Stain ICW kit III	GAR/GAM CellTag™ 520 Stain ICW kit IV	96-Well Plate for In-Cell Western™ Assays	
ICW kit I	ICW kit II			32plates	8plates
926-42091	926-42092	926-42093	926-42094	926-19157	926-19156

Protein Ladder

P/N	Product	Visible By Eye	Detected With Chemiluminescence	700 nm	800 nm
926-98000	WesternSure® Pre-stained Chemiluminescent	V	V		
928-40000	Odyssey® One-Color	V		V	
928-50000	Chameleon® Vue	V	V		
928-60000	Chameleon Duo	V		V	V
928-90000	Chameleon Kit	V		V	V
928-70000	Chameleon 700	V		V	
928-80000	Chameleon 800	V			V

WesternSure® Chemiluminescent Reagents

Product	P/N
WesternSure® PREMIUM Chemiluminescent Substrate (100ml kit)	926-95000
WesternSure® PREMIUM Chemiluminescent Substrate (20ml kit)	926-95010
WesternSure® Goat anti-Mouse HRP Secondary Antibody (1ml)	926-80010
WesternSure® Goat anti-Rabbit HRP Secondary Antibody (1ml)	926-80011
WesternSure® Pen	926-91000
WesternSure® ECL Stripping Buffer for Chemiluminescent Westerns (100ml)	926-92000



Western Blotting Kits with PVDF Membranes

Kits with PBS Buffer					
Kits	P/N	IRDye 800CW Goat anti-Mouse	IRDye 800CW Goat anti-Rabbit	IRDye 680RD Goat anti-Mouse	IRDye 680RD Goat anti-Rabbit
Kit I RD	926-35010	V			V
Kit II RD	926-35011		V	V	

Kits with TBS Buffer					
Kits	P/N	IRDye 800CW Goat anti-Mouse	IRDye 800CW Goat anti-Rabbit	IRDye 680RD Goat anti-Mouse	IRDye 680RD Goat anti-Rabbit
Kit V RD	926-32081	V			V
Kit VI RD	926-32082		V	V	

Blocking Buffers & Antibody Diluents

Product	Part Numbers And Base Buffer		Qty	Remark
	TBS	PBS		
Intercept® Blocking Buffer	927-60001	927-70001	500ml	Protein-Based Blocker
Intercept® Protein-Free Blocking Buffer	927-80001	927-90001	500ml	Protein-Free Blocker
Intercept® T20 Antibody Diluent	927-65001	927-75001	500ml	Protein-Based Diluent
Intercept® T20 Protein-Free Antibody Diluent	927-85001	927-95001	500ml	Protein-Free Diluent



Membranes & Membrane kits

Product	P/N	What's included
Odyssey Nitrocellulose Membrane	916-31090	0.22µm; Ten 7cm x 8.5 cm sheets
Odyssey Nitrocellulose Membranes	926-31092	0.22µm; One 30cm x 3m roll
PBS Blocking Buffer (500ml) and PVDF Kit	926-32098	0.45µm; 26.5cm x 3.75m roll + 500mL Intercept (PBS) Blocking Buffer
TBS Blocking Buffer (500ml) and PVDF Kit	926-32099	0.45µm; 26.5cm x 3.75m roll + 500mL Intercept (TBS) Blocking Buffer
4X Protein Sample Loading Buffer and PVDF Membrane Kit	926-31097	0.45µm; 26.5cm x 3.75 m roll + 15 mL 4XProtein Sample Loading Buffer
PBS Blocking Buffer (10x500ml) and PVDF Kit	829-32080	0.45µm; 26.5cm x 3.75 m roll + 10 x 500mL Intercept (PBS) Blocking Buffer
TBS Blocking Buffer (10x500ml) and PVDF Kit	926-32100	"0.45µm; 26.5cm x 3.75 m roll + 10 x 500mL Intercept (TBS) Blocking Buffer"



Primary Antibodies for Normalization

Product	P/N
β -Actin Rabbit Monoclonal Antibody (100ul)	926-42210
β -Actin Mouse Monoclonal Antibody (100ul)	926-42212
COX IV Rabbit Monoclonal Antibody (100ul)	926-42214
GAPDH Rabbit Monoclonal Antibody (100ul)	926-42216
Histone H3 Mouse Monoclonal Antibody (100ul)	926-42218
Histone H3 Rabbit Monoclonal Antibody (100ul)	926-42219
α -Tubulin Mouse Monoclonal Antibody (100ul)	926-42213
β -Tubulin Rabbit Polyclonal Antibody	926-42211
Vinculin Rabbit Monoclonal Antibody	926-42215

Revert™ Total Protein Stains for Western Blot Normalization

Product		P/N
Revert™ 700 Total Protein Stain Kit	100 mL kit	926-11010
	250 mL kit	926-11016
Revert™ 520 Total Protein Stain Kit	200ml kit	926-10010
	500 mL kit	926-10016
Revert™ 700 Total Protein Stain and Wash Solution Kit	100ml kit	926-11015
Revert™ 520 Total Protein Stain and Wash Solution Kit	200ml kit	926-10015

Western Blot Incubation Boxes

P/N	Box	Size	Length	Width	Height
929-97101	1	Small	7.2cm	4.9cm	3.0cm
929-97105	5				
929-97110	10				
929-97201	1	Medium	8.9cm	6.5cm	2.8cm
929-97205	5				
929-97210	10				
929-97301	1	Large	11.5cm	8.8cm	2.8cm
929-97305	5				
929-97310	10				
929-97401	1	X-Large	15.2cm	10.1cm	3.1cm
929-97405	5				
929-97410	10				



LI-COR

다양한 어플리케이션 & 최상의 퍼포먼스를 경험해보세요!

Odyssey® M Imaging System



자세한 스펙은,
QR코드를 스캔 하세요.



Pearl Trilogy

Near-Infrared Fluorescent &
Bioluminescent Small Animal
Imaging System

HS Biosystems

(주)에이치에스 바이오시스템즈

(주)에이치에스 바이오시스템즈

본사 : 경기도 화성시 동탄기흥로 593-16

대표전화 : 1670-4288 팩스 : 031-378-2239